

DLS 355

Dual Laser Source

1310nm and 1550nm Wavelengths

The DLS 355 dual laser source provides stabilized optical power levels for accurate loss measurements on single mode fiber systems. Technicians can utilize each of the wavelengths included in this light source to reference and test with ODM's optical power meters and gather measurements to meet international standards.

The DLS 355 provides a 2 kHz tone output which is recognized by optical power meters; the incoming 2 kHz signal is identified and an audible alert is provided by the power meter. This 2kHz signal will also allow fiber identification when used with non-invasive fiber identifier devices, such as the LFI 110.

Easy removal of the included SC adapter allows the light source ferrule to be cleaned, preventing contamination of test jumpers. Additional adapters are available.

This device maintains full compliance with all FDA and CFR standards for light-emitting products.



Features

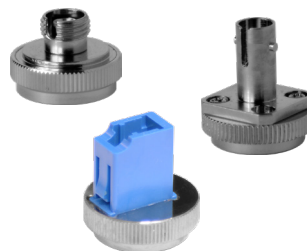
- Small form-factor for fast, simple testing in the field
- Single output port ensures faster switching when testing at multiple wavelengths
- NIST-traceable laser output
- Long-lasting battery
- Carrying pouch included



Combine DLS 355 with an optical power meter (RP 460 pictured) to perform insertion loss tests on single-mode fiber.



The 2kHz tone output of the DLS 355 can be recognized through the fiber jacket when a Live Fiber Identifier is used.



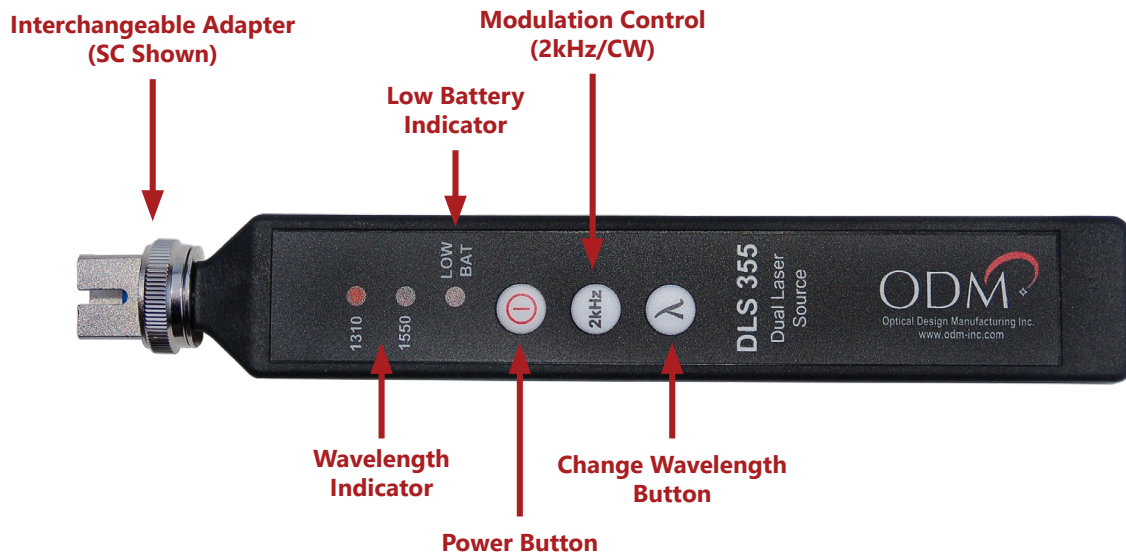
Quick-change adapters allow users to adjust the DLS 355 output to match their testing situation. See next page for full list of adapters.



Single-instrument padded carrying pouch included.

Specifications

DUAL SINGLEMODE LASER SOURCE	
Wavelength	1310nm & 1550nm
Output Power	-5.0 dBm
Output Stability	±0.05dB (1 Hour) ±0.03dB Long-Term (15 min warm-up)
Spectral Width	5nm / 5nm
Optical Interface	SC/FC/ST/LC Interchangeable
Tone Output	2 kHz
Laser Class	Class 1 (FDA 21 CFR 1040.11)
Power	Push Button Toggle / Auto-OFF
Battery	CR2
Operating Temperature	-10° to +50° C
Storage Temperature	-30° to +60° C
Dimensions	6.1" x 0.94" x 0.75" (15.5 x 2.38 x 1.9 cm)
Weight	3 oz (85.4 g)



Ordering Information

Light Source Adapters

PART NO.	DESCRIPTION
AC 022B	SC Adapter
AC 023B	FC Adapter
AC 024B	ST Adapter
AC 025B	LC Adapter

Patch Cord Accessories

PART NO.	DESCRIPTION
AC 500	SM SC-LC - 1m Simplex
AC 501	SM SC-SC - 1m Simplex
AC 502	SM LC-LC - 1m Simplex
AC 600	SC-SC Simplex Bulkhead Adapter
AC 601	LC-LC Simplex Bulkhead Adapter
AC 602	LC-LC Duplex Bulkhead Adapter

Cleaning Tools

PART NO.	DESCRIPTION
AC 089	One-Click Cleaner for 1.25mm & ODC Ferrules / Bulkheads
AC 099	One-Click Cleaner for 2.5mm Ferrules / Bulkheads
AC 090	1.25mm Swabs (100 per Pack)
AC 091	2.5mm Swabs (100 per Pack)
AC 092	SqR Pad & Fiber Wash Pen
AC 190	Cletope Cleaner - Type B - Blue Tape

M-DS002-07 DLS 355

Ripley ODM® brand test equipment is furnished with a 2 year warranty extending from the original date of purchase. Contact Ripley Tools for information on recalibration and repair of test equipment. Ripley makes every effort to ensure that all information in this data sheet is accurate. Ripley Tools assumes no responsibility for any errors or omissions and reserves the right to modify this document at any time without notice. Please contact Ripley ODM® brand specialists for pricing and availability of equipment.

